

PcMars Farm Accounting Software



[Click Here to Return to PcMars Tips](#)

Applies to Version 2.1 and greater

The first thing is that PcMars is **NOT** network program!! A true network program invokes file locks and would allow numerous users to be entering transactions into the same set of books. PcMars will **NOT** allow you to do this.

However, most users simply want to access data via a network, which is possible with PcMars. Here's how-----

1. Load the PcMars **with** sample data on **every** computer you want to access the data from.
2. Once all the programs are loaded, go into PcMars to "Options"⇒"Miscellaneous Options" and make sure to select "Advanced file management".
3. Assign a drive letter to the folder you want to share. The procedure varies depending on the Window version you are using. To assign a drive letter using the Windows XP operating system:

1. Open My computer.
2. On the **Tools** menu, click **Map Network Drive**.
3. In **Drive**, select a drive letter.
4. In **Folder**, type the server and share name of the computer or folder you want.

Example:

\\servername\sharename

-or-

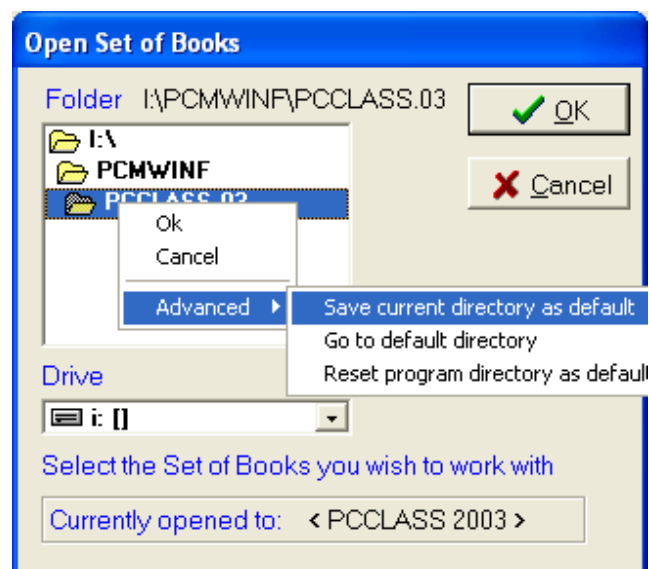
Click **Browse** to find the computer or folder.

Other Window Setup Tips:

To reconnect to the mapped drive every time you log on, select the **Reconnect at logon** check box.

Mapped drives are available only when the host computer is available.

ALSO—You can set the network path in PcMars as a default. To do this simply right click when you are selecting the "Set of Books" to get a drop down menu. (See below). Then choose "Save current directory as default".



CAUTION: NEVER HAVE MORE THAN ONE PCMARS PROGRAM OPENED TO THE SAME SET OF BOOKS!!! THIS WILL CORRUPT YOUR DATA.